

## Trevor's TWIST; A Rare Case Of Sacroiliac Joint Involvement

Dr. Zubia Tarar, Dr. Saneela Mumtaz, Dr. Kashif Siddique, Dr. Muhammad Asad Ullah.

Department Of Radiology, Shaukat Khanum Hospital Lahore.

### OBJECTIVE:

- To present a rare case of Trevor's disease (dysplasia epiphysealis hemimelica) involving the sacroiliac joint, highlighting its unusual location and its imaging findings.
- **TREVOR'S DISEASE:** *It is an osteocartilaginous exostosis from epiphysis, facing towards the joint. . The sacroiliac location is extremely rare, with very few reported cases worldwide.*

### METHOD:

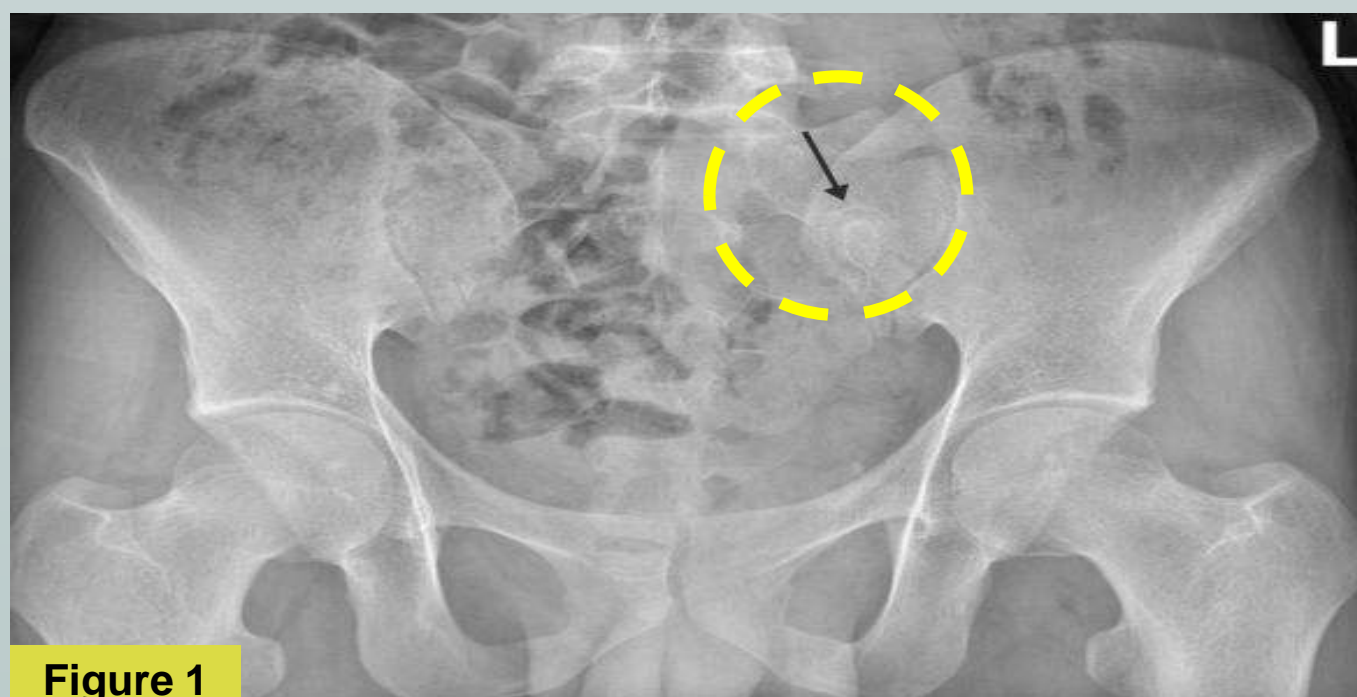
- A case-based descriptive study was conducted.
- Clinical history, imaging modalities including X-ray, CT, and MRI were reviewed.

### RESULT:

- A young patient presented with chronic low backache.
- Radiographs revealed small ossified structure adjacent to the left sacroiliac joint.
- CT confirmed exophytic osseous growth arising from the epiphysis, while MRI demonstrated cartilage-capped proliferation with no malignant features.
- Findings were consistent with Trevor's disease. Intra-articular injection for pain management and follow up was advised.

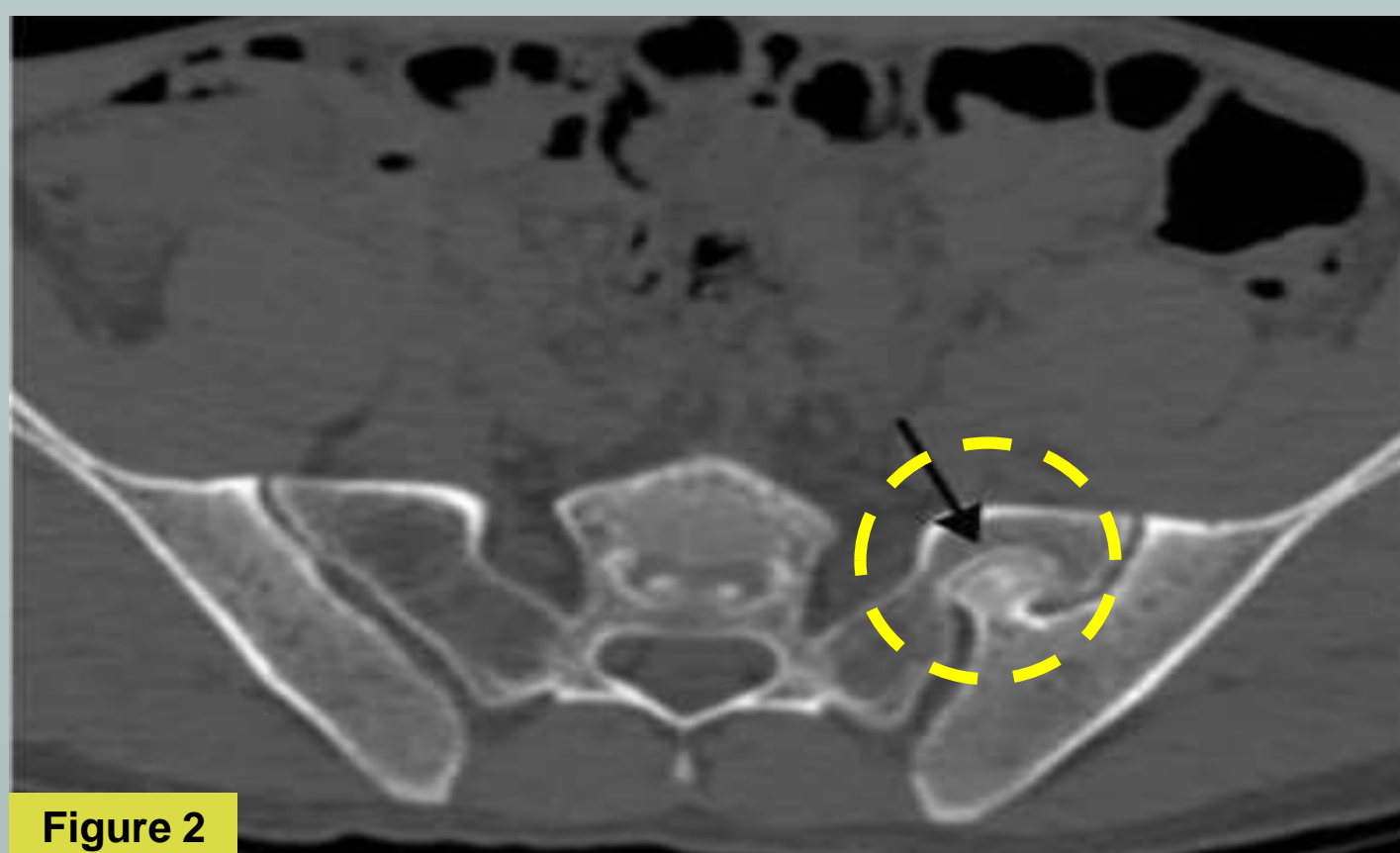
### CONCLUSION:

- Trevor's disease is a rare developmental disorder that most commonly involves the ankle and knee. Sacroiliac joint involvement is exceptional and poses diagnostic challenges.
- Awareness of its imaging features can help differentiate it from osteochondroma or malignant lesions, guiding appropriate patient management.



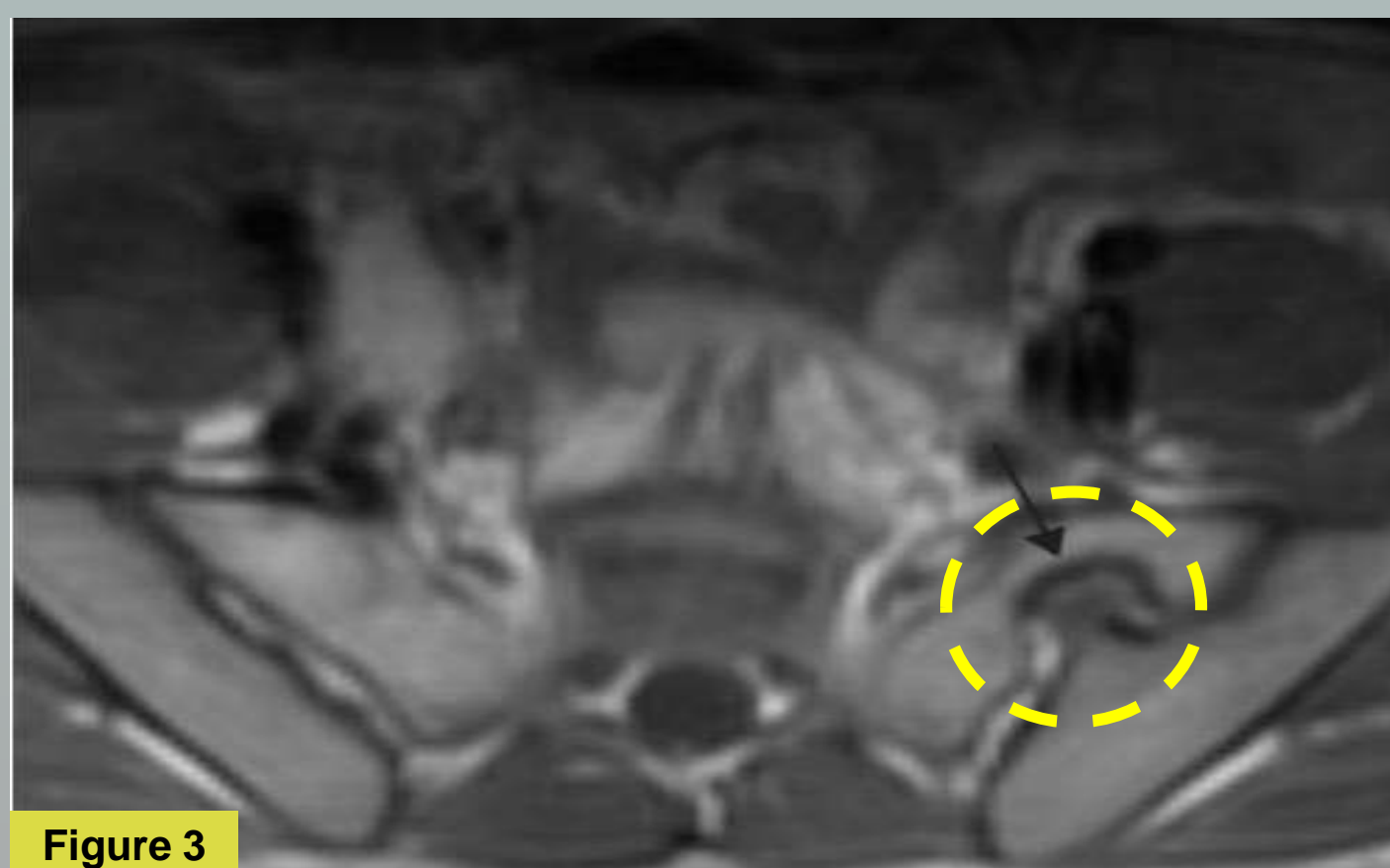
**Figure 1**

Figure 1: X-ray of the pelvis: Radio-opaque focal abnormality is noted in the left sacroiliac joint (SI)



**Figure 2**

Figure 2: CT pelvis, bone window, axial section: Pedunculated lesion arising from the left iliac bone, pointing towards the sacroiliac joint, suggestive of trevor's disease



**Figure 3**

Figure 3: MRI pelvis, T1 weighted, axial image: Left SI joint osteochondroma shows thin cartilaginous cap.